

Application of CHLORONE™

**in Air Fumigation &
Surface Sanitization**
for Bacterial, Pathogen &
Virus Decontamination

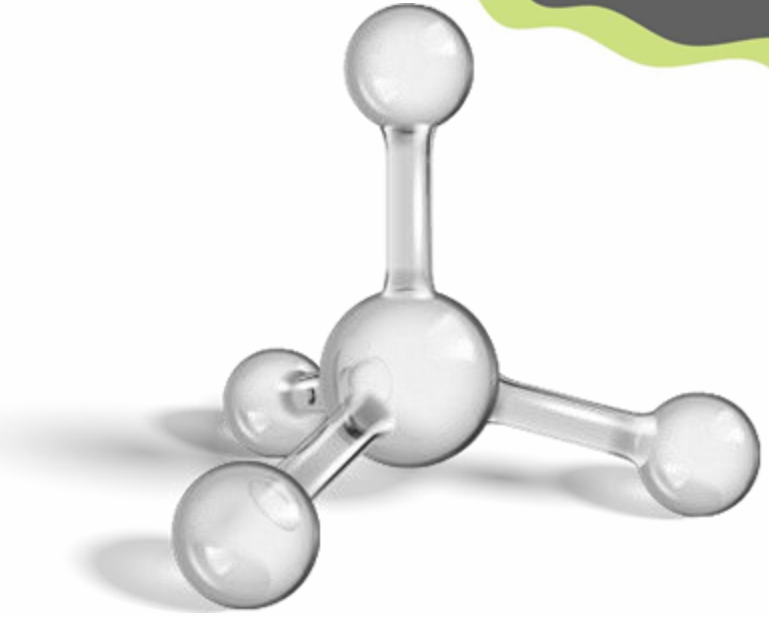


What is **CHLORONE** ?

Chlorone is a third generation unique system of generating Chlorine Dioxide (ClO_2). It's a single component powder system designed to release ClO_2 , which is a unique combination of ingredients which were till date found in a two component system as an activator and releaser. This is the most convenient way to deliver high purity of Chlorine Dioxide at the point of use.

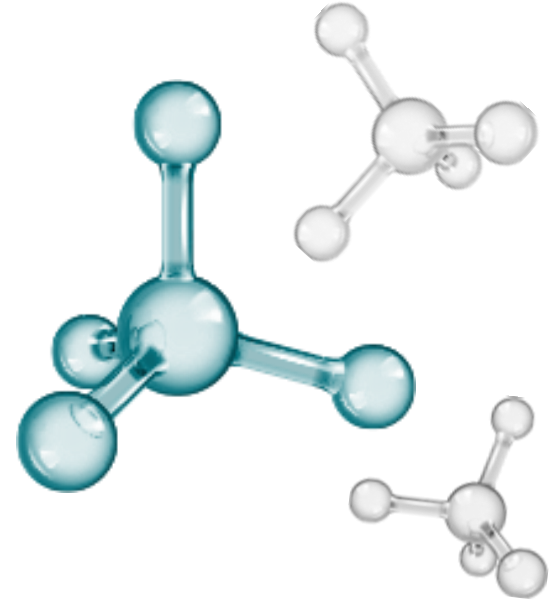
What is **Chlorine Dioxide** ?

Chlorine Dioxide (ClO_2) is a synthetic, green-yellowish gas with a chlorine-like, irritating odour. **Chlorine dioxide is very different from elementary Chlorine**, both in its chemical structure as in its behavior. Chlorine dioxide is a small, volatile and very strong molecule. In diluted, watery solutions chlorine dioxide is a free radical.



Chlorine Dioxide - CAS No 10049-04-4

is an approved and allowed substance for human and animal consumption according to



Reference :

In India ClO₂ has been used since 2005 in drinking water, waste water and various air and water disinfection and sanitation application. Currently in over 11 states the product is used for water, air, surface and equipment sanitation.

Chlorine Dioxide for COVID-19

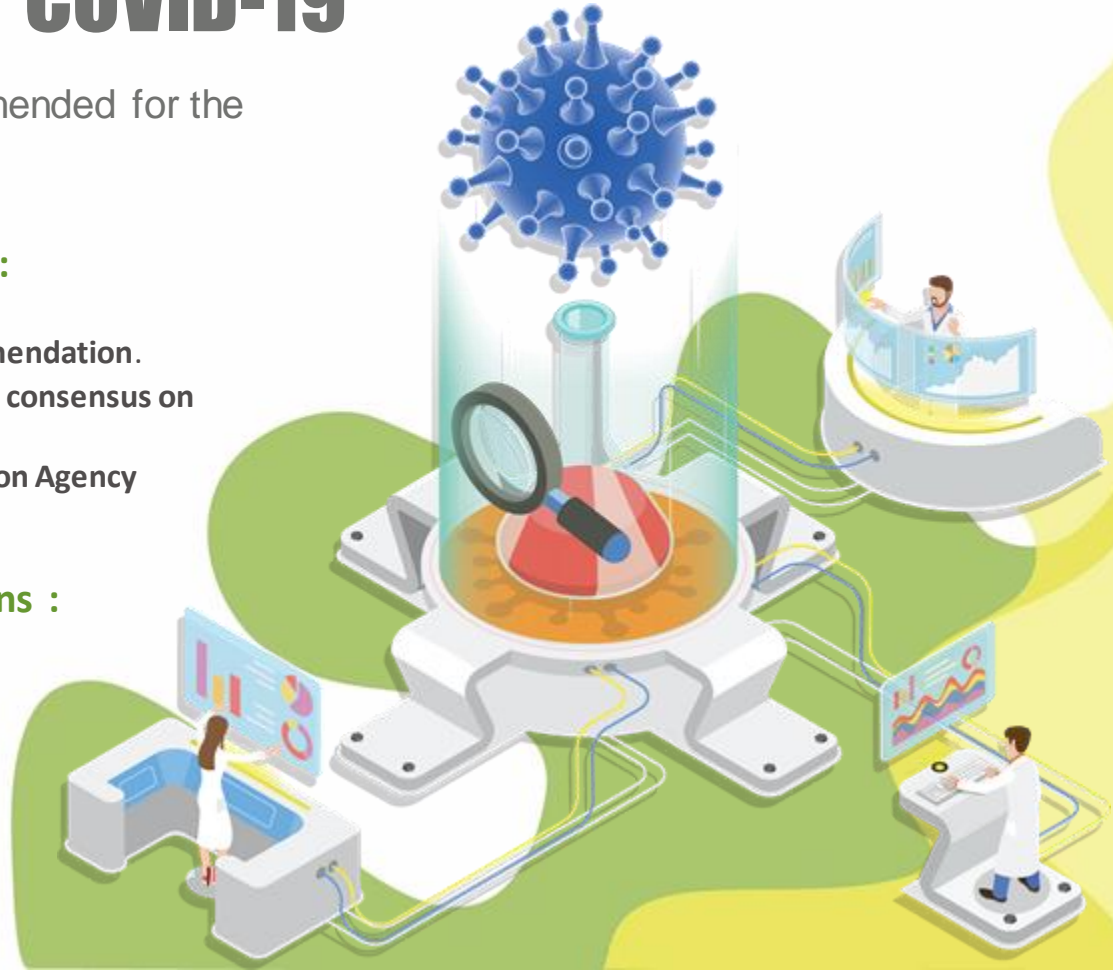
ClO₂ has been widely used and recommended for the COVID-19 decontamination globally.

Global References & Recommendations :

- Beijing Capital International Airport Recommendation.
- Chinese Pharmaceutical Association – Expert consensus on Guidance and Prevention strategies
- US-EPA – United State Environment Protection Agency
- China National Health Commission

Domestic References & Recommendations :

- Gujarat State Dental Council – Advisory - 4th May 2020
- ICMR (Indian Council For Medical Research)
- National Institute Of Virology Kerala Unit



BENEFITS OF USING ClO₂ MOLECULE

- Reduces service time.
- Effective in both liquid and gas phases.
- Easy to use and generate, so you can dramatically reduce your service time.
- Completely decontaminate the surface, strips and removes biomass on surface remains cleaner longer & recontamination is reduced.



Advantages & Benefits of CHLORONE



- Purifies any room as it is applicable for all types of indoor air fumigation.
- One **CHLORONE** sachet can treat upto 400-450 sq ft of area.
- Reaches every niche and corner of the room.
- No personal or technical assistance needed.
- Eliminates the need for any machine.
- Highly economical and low cost product.
- Human friendly.

Working of CHLORONE :

Chlorone powder after addition to 100 ml water releases **Chlorine dioxide by acidification of Sodium Chlorite**. ClO_2 being generated in gaseous form has self dispersal mechanism and being lighter than air it easily reaches in all corners of the room.

Applications of CHLORONE



Warehouse & Storeroom



Cafe & Restaurant



School, College & Sports Facilities



Theatre, Auditorium & Public Places



Temple & Other Religious Places



Office & Cubicals



Shops & Malls



Clinic, Operation Theater & Hospitals



Home & Hotel Rooms

Directions for Using **CHLORONE** :

Take a Plastic Container and add 100 ml of water to it

1



Empty one CHLORONE Sachet to the container.

2



Leave the room closed for 4 hrs.

3



4

Post 4 hrs Ventilate for 15 mins by opening window and switching On the A.C or AHU. Room is ready to use.

THANK YOU

SVS AQUA TECHNOLOGIES

Office Address:

Plot No. 43/44/45, Gut No. 411,
Village Urawade, Taluka - Mulshi,
Pune - 412111, Maharashtra.

Helpline : +91 8087005141 / 42 / 43

Email : customercare@svsaqua.com



svsaqua.com



SVS

AQUA TECHNOLOGIES

